

# DINO<sup>®</sup> 205RXT



**DINO Lift<sup>®</sup>**

*Get Lifted<sup>™</sup>*

**RXT-SERIES**



# DINO® 205RXT



**Hydraulic outriggers with impressive levelling ability**  
– the platform can be operated on severely sloping terrain.



**Oscillating front axle**  
– ensures that all the wheels are in contact with the ground, giving maximum traction.

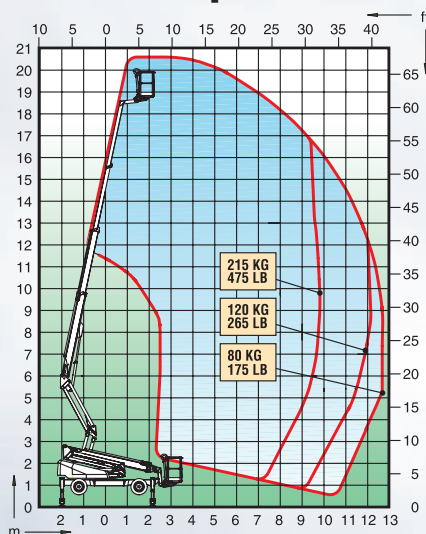


**Four wheel drive with strong gradeability**  
– provides the drive to climb up to 35% inclines.



**Long outreach with stable articulated boom**  
– for 'up and over' access, with telescopic top boom section.

## Technical specification



### PERFORMANCE

Max. working height	20.5 m	67'5"
Max. platform height	18.5 m	60'10"
Max. outreach	12.6 m	41'5"
Lifting capacity	215 kg	475 lb
Boom rotation	cont.	cont.
Basket rotation	90°	90°
Support length	4.4 m	14'4"
Support width	4.0 m	13'2"
Max. inclination of ground surface	8°	8°
Inner turning radius	2.15 m	7'
Outer turning radius	4.65 m	15'3"
Gradeability	35 %	35 %
Drive speed		
high	4.7 km/h	2.9 mph
low	1.5 km/h	0.9 mph

### DIMENSIONS

Basket size	0.7x1.3 m	2'4"x 4'3"
Transport length	5.85 m	19'2"
Transport width	2.11 m	6'11"
Transport height	2.41 m	7'11"
Weight	4200 kg	9260 lb

The specification is subject to change without notice.

### CHASSIS

Four wheel drive standard  
Steering 2-WS / 4-WS / crab steering  
Tyres, 12 - 16.5

### POWER SOURCE

Diesel engine 19.7 kW (26.4 hp)

### OTHER STANDARD FEATURES

Boom control proportional  
Level control electrical, with LED-display  
AC-socket in the basket

### OPTIONS

Large basket 0.9 x 1.55 m / 2'11" x 5'1" with load control  
Power source electric motor (230 V) for boom motions  
Outrigger control automatic levelling system

The self-propelled RXT-series DINOs are designed for rough terrain.

Articulating boom with telescopic top section enables access to work areas even over obstacles.

The lightweight and compact RXT lifts are easy to transport and can be driven on sensitive floors.

## DINO Lift®

Dinlift Oy • Raikkolantie 145  
FI-32210 Loimaa • Finland

Tel +358-2-76 25 900  
Fax +358-2-76 27 160  
Internet www.dinlift.com