

Meet

DINO 220XSE

DINO® BOOM LIFTS

Standard features in DINO 220XSE:

- 350 kg basket capacity, XXXL basket 1.3 x 2.4 m
- Additional material handling capability – lifting capacity up to 500 kg
- Full working envelope in all directions with full basket load
- Basket mounted on forks with a safe, lockable quick-release mechanism
- Permanent 4WD, 40 % gradeability, oscillating axle
- Fully operational and safely drivable with up to 5 degrees tilt
- Continuous boom rotation and direction sensing driving
- DINO SafeGuard secondary guarding

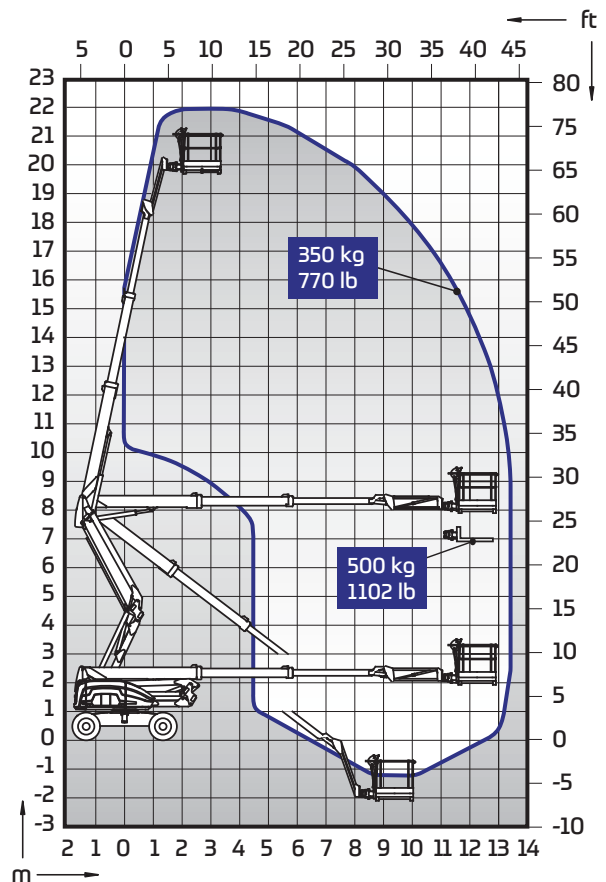


Options available for DINO 220XSE:

- Hydraulically operated outriggers with automatic levelling - enable working in up to 12° inclination and fast set up
- Radio control for perfect visibility all round
- Multiple basket and material handling options
- Lifting hook for 500 kg
- DINO SkyRack, plate and tube rack
- Basket for materials 1.3 x 1.7 m
- Hydraulic generator 5kW
- Non-marking tyres
- LED driving lights and working lights in basket

| Technical data | Metric | Imperial |
|----------------------------|---|------------------------|
| Max. working height | 21.95 m | 72 ft 1 in |
| Max. outreach | 13.40 m | 43 ft 12 in |
| Lifting capacity | 350 / 500 kg | 770 / 1102 lb |
| Basket size | 1.3 x 2.4 m | 4 ft 3 in x 7 ft 10 in |
| Boom rotation | cont. | cont. |
| Basket rotation | 180° | 180° |
| Jib | 1.6 m / 150° | 5 ft 3 in / 150° |
| Transport length * | 8.15 m | 26 ft 9 in |
| Transport width | 2.40 m | 7 ft 10 in |
| Basket detached | 2.33 m | 7 ft 7 in |
| Transport height | 2.56 m | 8 ft 5 in |
| Up and over | 8.45 m | 27 ft 9 in |
| Weight * | 12700 kg | 28000 lb |
| Diesel engine | Deutz 36.3 kW | Deutz 36.3 kW |
| Max. levelling inclination | 5° (12°) | 5° (12°) |
| Gradeability (4WD) | 40 % | 40 % |
| Drive speed | 6.0 / 1.0 km / h | 3.7 / 0.6 mph |
| Ground clearance | 0.43 m | 1 ft 5 in |
| Wheelbase | 2.67 m | 8 ft 9 in |
| Outside turning radius 2WS | 5.50 m | 18 ft |
| Tailswing | 0.60 m | 1 ft 12 in |
| Tyres | 355 / 55D625 | 355 / 55D625 |
| Hydraulic outriggers | option | option |
| R / C control | option | option |
| Other information | 100% differential lock + limited slip Secondary guarding | |

*) with std specification, basket mounted on forks



DINOLIFT

UP TO THE JOB

DINOLIFT Oy | Raikkolantie 145 • FI-32210 LOIMAA, FINLAND

Tel: +358 (0)20 1772 400 • E-mail: info@dinolift.com

Read more: www.dinolift.com

Technical specifications are subject to change without prior notice.

©Dinolift Oy | 17.4.2018