

**DINOLift**  
Up to the Job



**SPIDER DINO®**

**DINO XTC II Series**

- Working heights 18.5 – 22.0 m
- Excellent levelling capability
- For extreme working conditions

# Spider XTC II series

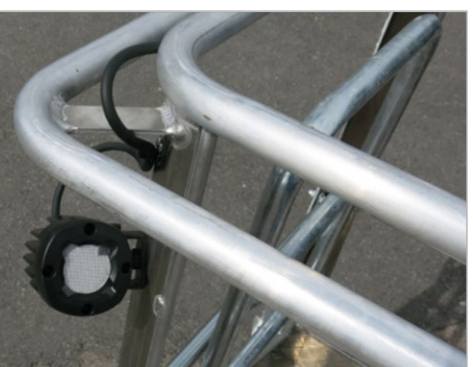
## Standard features in all DINO XTC II –models:

- Compact and narrow; width 1.4 m / 1.18 m
- Extremely stable to drive – long tracks; low ground pressure – low center of gravity
- Strong diesel engine, excellent gradeability 43 % (picture 1)
- Levelling to the max. inclination 16° (picture 2)
- Hydraulic basket rotation 180° (picture 3)
- Easy-entry basket (picture 4)
- Continuous rotation of the boom
- AC sockets in the basket



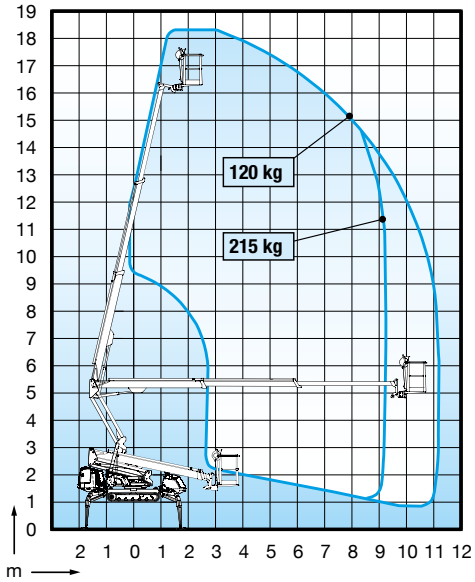
## Options available for all DINO XTC II –models:

- User-friendly radio control (picture 1 and 5)
- Automatic levelling
- Electro motor 230V
- Non-marking tracks (picture 6)
- GPS telematics device
- Special colour (picture 7)
- Converter 110V
- Narrow basket 0.70 x 0.80 m
- LED working lights (picture 8)



**DINO** 185XTC II

**Technical data**

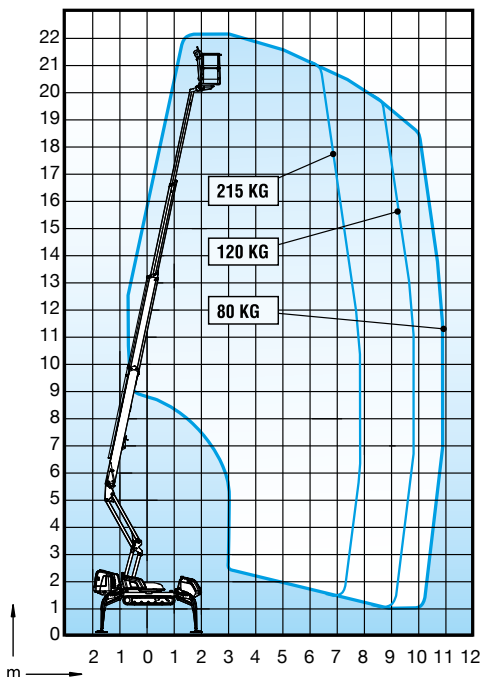


Max. working height	18.50 m
Max. platform height	16.50 m
Max. outreach	11.20 m
Support width	3.54 / 3.95 m
Lifting capacity	215 kg
Basket size	0.7 x 1.3 m
Boom rotation	cont.
Basket rotation	180°
Boom control	proport.
Transport length	5.93 m
Transport width	1.40 m / 1.18 m
Transport height	1.98 m
Weight	2860 kg
AC socket in the basket x 2	std
Diesel engine	std, Kubota 17.3 kW
Length of tracks	1.93 m
Gradeability	43 %
Max. levelling inclination	16°
Drive speed	1.4 / 2.4 km/h
Radio control	option
Automatic levelling	option
Electro motor	option



**DINO** 220XTC II

**Technical data**



Max. working height	22.10 m
Max. platform height	20.10 m
Max. outreach	11.00 m
Support width	3.54 / 3.95 m
Lifting capacity	215 kg
Basket size	0.7 x 1.3 m
Boom rotation	cont.
Basket rotation	180°
Boom control	proport.
Transport length	6.30 m
Transport width	1.40 m / 1.18 m
Transport height	1.98 m
Weight	3060 kg
AC socket in the basket x 2	std
Diesel engine	std, Kubota 17.3 kW
Length of tracks	1.93 m
Gradeability	43 %
Max. levelling inclination	16°
Drive speed	1.4 / 2.4 km/h
Radio control	option
Automatic levelling	option
Electro motor	option



**DT 3500L****DT 3500L trailer**

- **Weight** 410 kg
- **Length** 6.20 m
- **Width** 2.07 m
- **Payload** 3050 kg



Up to the challenge.

**DINOLIFT**  
*Up to the Job*

Dinolift Oy

Raikkolantie 145 • FI-32210 LOIMAA • FINLAND • Tel. +358 (0)20 1772 400 • Fax +358 (0)2 76 27 160

[www.dinolift.com](http://www.dinolift.com)

Dinolift Oy is a Finnish company that designs, manufactures and sells high-quality DINO aerial work platforms since 1974. DINO platforms allow you to work above ground safely and effectively, while offering an enjoyable user experience from ground up. DINO lifts have been sold to more than 40 countries around the world, with exports accounting for 75% of production. The company's main markets are in the Nordic countries and in northern Europe.

**Technical specifications are subject to change without prior notice.**

