

DINO® 135T



DINO Lift®

Get Lifted™

T-SERIES

DINO® 135T



Short and compact
– easy to handle.

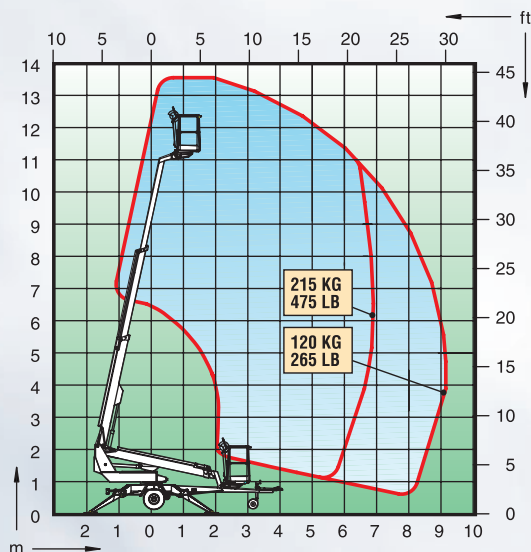


User friendly driving system
– easy and effortless.



Strong and spacious basket
– with two 110V or 230V power outlets for power tools.

Technical specification



Max. working height	13.5 m	44'5"
Max. platform height	11.5 m	37'10"
Max. outreach	9.1 m	29'10"
Support width	3.8 m	12'6"
Lifting capacity	215 kg	475 lb
Basket size	0.7x1.3m	2'4" x 4'3"
Boom rotation	cont.	cont.
Basket rotation	90°	90°
Boom control	proport.	proport.
Transport length	5.94 m	19'6"
Transport width	1.78 m	5'10"
Transport height	2.14 m	7'0"
Weight	1560 kg	3440 lb
Driving system	std	std
AC-socket in the basket	std	std
Electro motor	std	std
Petrol power pack	opt.	opt.
Gradeability	25%	25%

The specification is subject to change without notice.

T-series DINOs are lightweight, compact and easy to operate.

Hydraulic outriggers enable quick and easy set up.

Proportional controls and telescopic boom ensure stable and precise access to the work position even at long outreach.

DINO Lift®

Dinolift Oy • Raikkolantie 145
FI-32210 Loimaa • Finland

Tel +358-2-76 25 900

Fax +358-2-76 27 160

Internet www.dinolift.com